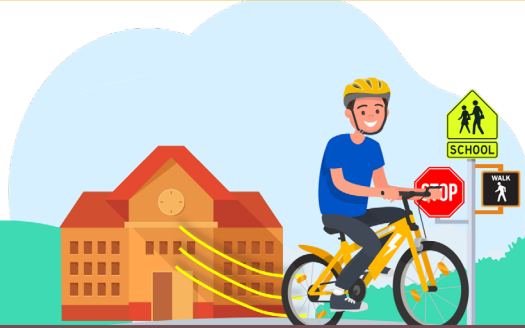


What Parents Should Know

E-Bikes

More kids on bikes means fewer cars on the road. But before buying a motorized bike for your teen, consider if it's really needed. Are there steep hills or long distances to cover? Is your teen mature enough to handle the extra power and responsibilities of operating one?



E-Bikes for Teens

- ✓ Fun + builds independence
- ✓ Longer trips faster, hills easier
- ✓ Hauling books + equipment
- ✓ More bikes = fewer cars



CAUTION Teens & E-Bikes

- ✓ E-bikes are heavier and harder to maneuver.
- ✓ High speeds can lead to severe crashes and injuries.
- ✓ Riders must obey all traffic laws. Disobeying laws, including right of way, stopping, and wrong way riding can lead to severe crashes and injuries.
- ✓ Parents are financially and legally liable for incidents.
- ✓ Non-compliant or modified e-bikes can go faster than 20 MPH and be used for stunts/wheelies.
- ✓ "E-motos" are often mislabeled as e-bikes but are mini-motorcycles in disguise.

Feature	Class 1/2/3 E-Bike	E-Moto
Operable Pedals	Required	Not required (often fake)
Motor Power	≤ 750 Watt	Often 1,000-6,000 Watt
Top Speed	≤ 20-28 mph	30-65+ mph
Licensing / Registration	No	Required
Product Category	Consumer product	Motor vehicle
Street Legal for Minors?	Yes. Must be 16 to ride a Class 3 e-bike	No, unless registered and licensed

What Parents Should Know

E-Scooters

- ❑ Must be age 16+ and licensed
- ❑ Prohibited on sidewalks
- ❑ Prohibited on multi-use trails
- ❑ Allowed on ≤25 mph roads or bike lanes
- ❑ Speed limit: 15 mph
- ❑ Tandem riding prohibited
- ❑ Helmets required



E-Scooters for Teens 16+

- ✓ Fun + builds independence
- ✓ Longer trips faster, hills easier
- ✓ More scooters = fewer cars



CAUTION Teens & E-Scooters

- ✓ High speeds can lead to severe crashes and injuries.
- ✓ Riders must obey all traffic laws. Disobeying laws, including right of way, stopping, and wrong way riding can lead to severe crashes and injuries.
- ✓ Parents are financially and legally liable for their teens' e-scooter incidents

	E-Bikes	E-Scooters
Age Restriction	Class 1, 2: none Class 3: ≥ 16	≥ 16
Licensing	None	Required
Sidewalk Riding	Not generally allowed	Not allowed
Multi-use Trails	Class 1, 2: Allowed, 15 mph max Class 3: Prohibited	Prohibited
Street Riding	Allowed	Allowed on ≤ 25 mph streets or in bike lanes. Speed limit: 15 mph
Helmets	Age 17 or younger: Required for all devices. Age 18+: Required on Class 3 e-bikes	